

RACK RENTALS

By

FINSOFT



Bare Metal Server

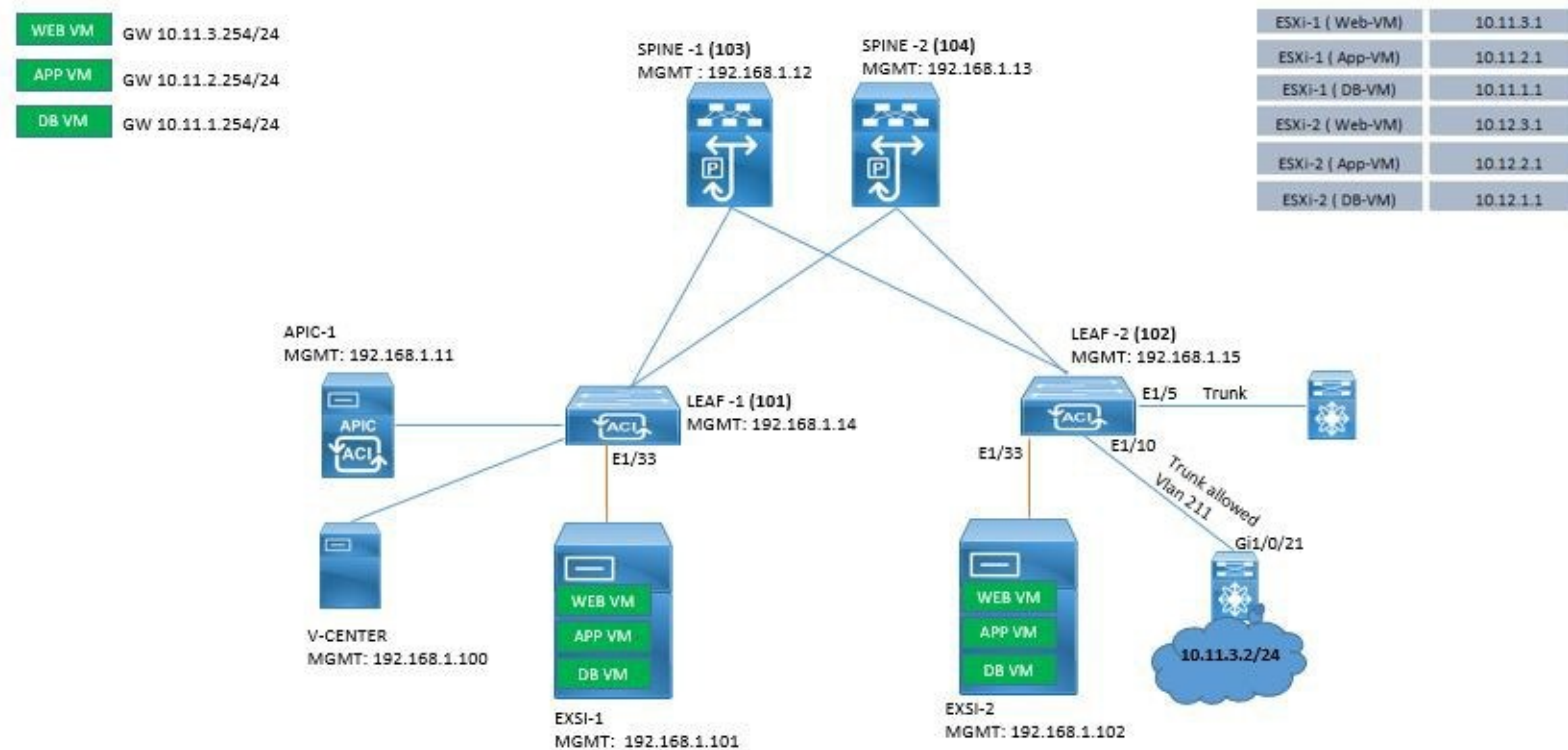
DELL POWEREDGE R410

The Dell PowerEdge R410 is a powerful and ultra-dense 2-socket 1U server that offers the performance of Intel® Xeon® processor 5500 and 5600 series, DDR3 memory, the availability of up to four hard drives (3.5" or 2.5"), and an exceptional value.

RAM	STORAGE	COST PER DAY	COST PER MONTH
256 GB	8 TB	\$34	\$610
512 GB	8 TB	\$41	\$680
128 GB	12 TB	\$48	\$1025

Cisco ACI

TOPOLOGY



Cisco Application Centric Infrastructure (Cisco ACI™) technology enables you to integrate \ virtual and physical workloads in a programmable, multihypervisor fabric to build a multiservice or cloud data center. The Cisco ACI fabric consists of discrete components that operate as routers and switches, but it is provisioned and monitored as a single entity.

This describes how to implement a fabric such as the one depicted in

Figure 1. The design described in this document is based on this

reference topology:

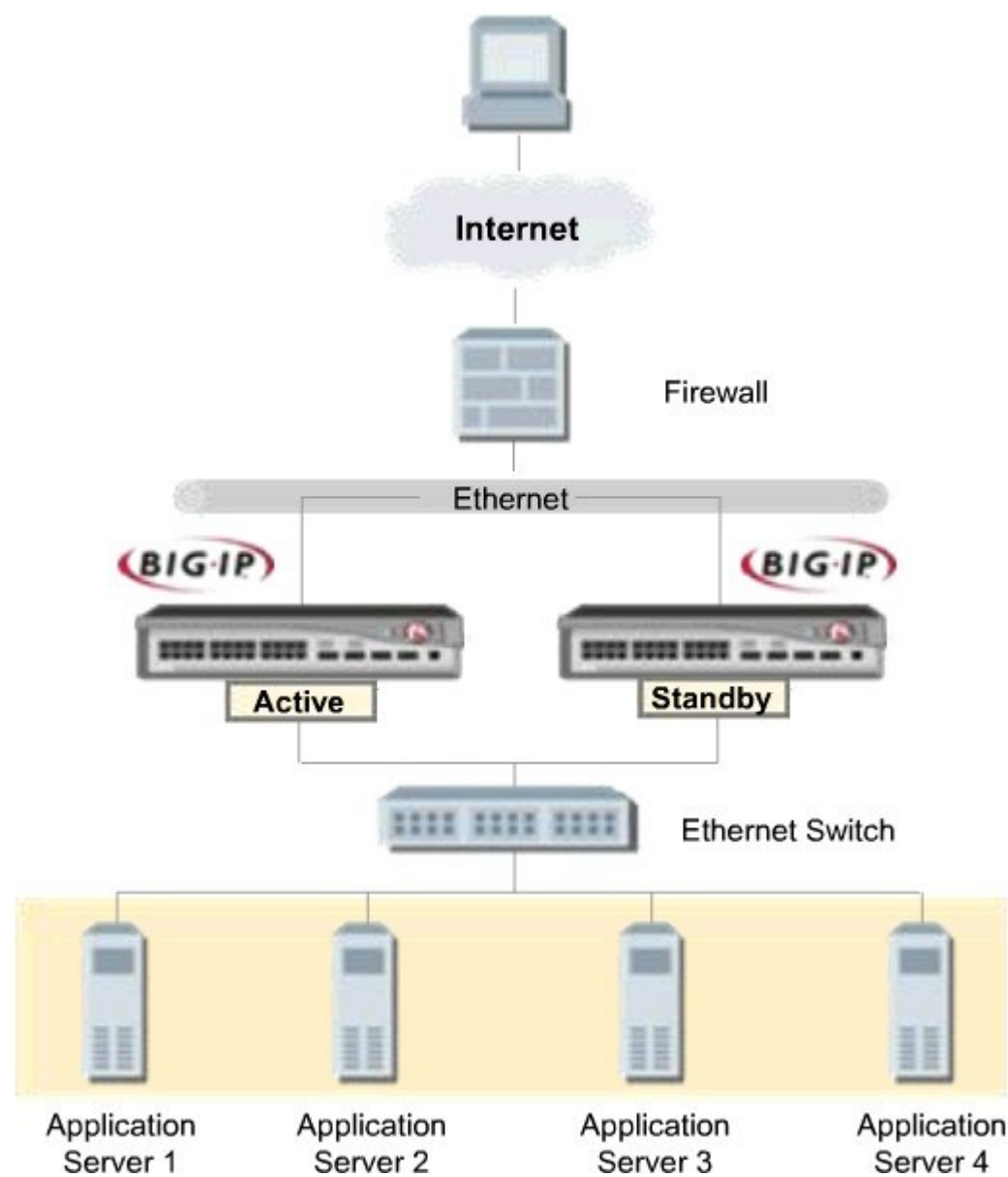
- **Two spine switches interconnected to several leaf switches**
- **Top-of-Rack (ToR) leaf switches for server connectivity, with a mix of front-panel port speeds: 1, 10, 25, 40**
- **Physical and virtualized servers dual-connected to the leaf switches**
- **A pair of border leaf switches connected to the rest of the network with a configuration that Cisco ACI calls a Layer 3 Outside (L3Out) connection**
- **A cluster of three Cisco Application Policy Infrastructure Controllers (APICs) dual-attached to a pair of leaf switches in the fabric**

Price:

\$25 for 4 hours

F5 Load Balancer

T O P O L O G Y



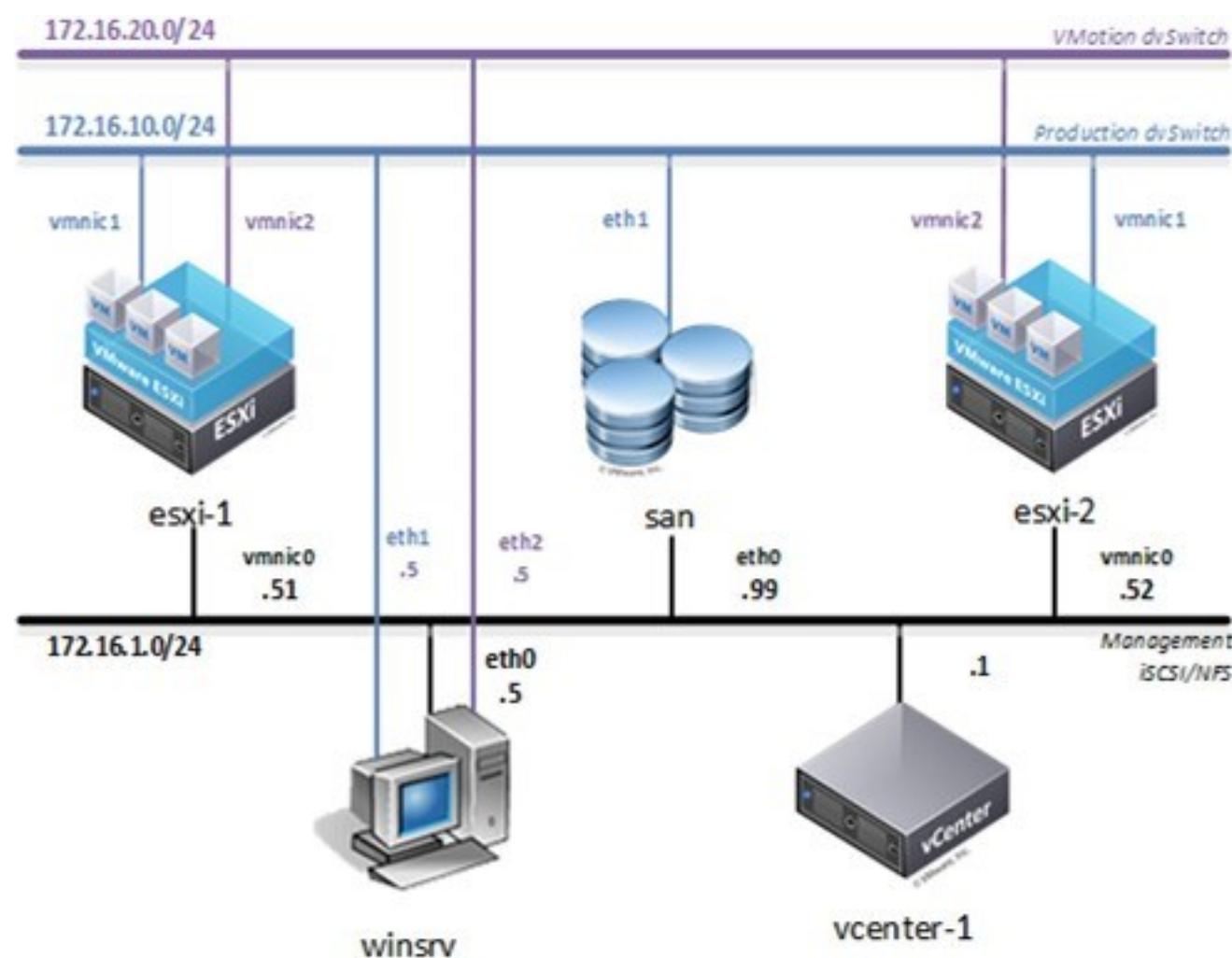
A load balancer is a device that acts as a reverse proxy and distributes network or application traffic across a number of servers. Load balancers are generally grouped into two categories: Layer 4 and Layer 7. Layer 4 load balancers act upon data found in network and transport layer protocols (IP, TCP, FTP, UDP). Layer 7 load balancers distribute requests based upon data found in application layer protocols such as HTTP.

Price:

\$25 for 4 hours

VMware vSphere

TOPOLOGY



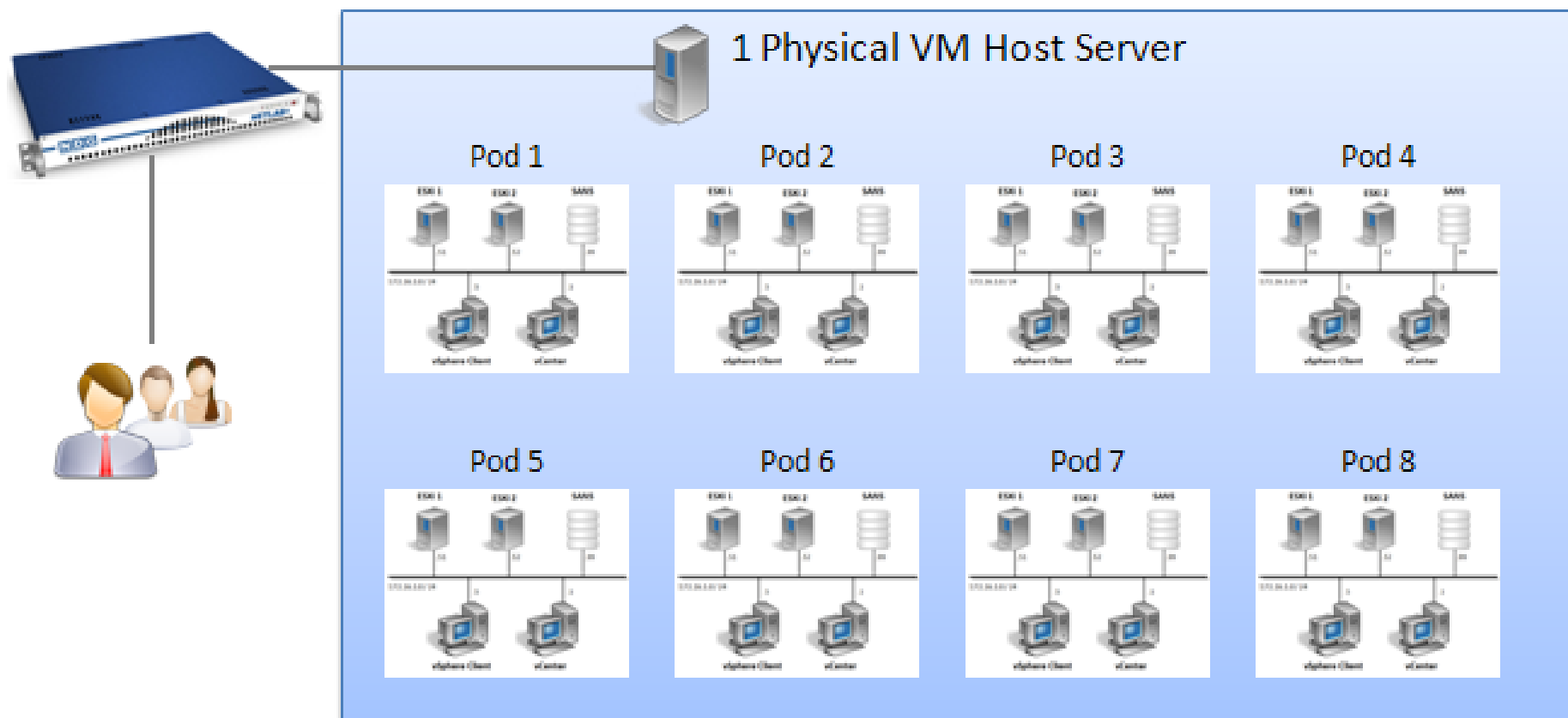
In the Finsoft pod design for the VMware IT Academy vSphere (O&S) course, all lab components are 100% virtualized (i.e. ESXi-in-ESXi) to achieve a high pod to physical host ratio, at a significantly lower cost point relative to traditional delivery of vSphere O&S. Using virtualization and the sharing and scheduling capabilities of NETLAB+, each student (or team of students) has access to their own set of virtual equipment, which they may maintain exclusive use of throughout the course.

Price:

\$25 for 4 hours

Significant Cost Reduction

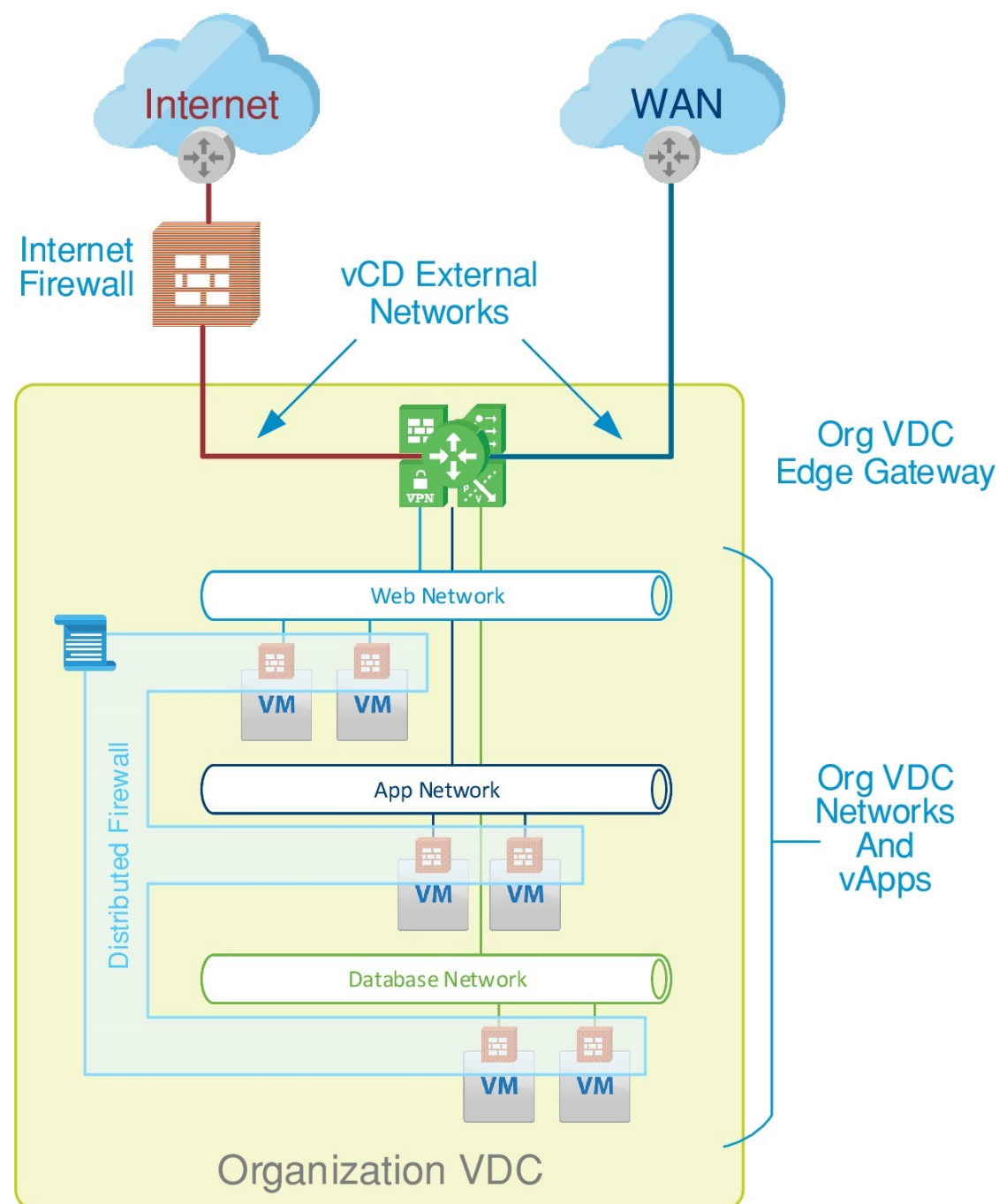
- Several ICM pods can run on one physical server, on the order of 8 simultaneous pods to 1 physical server on a dual CPU Intel server.



Finsoft's use of virtualized lab components results in a significant cost reduction by allowing several pods to run simultaneously on one physical server (final ratio to be determined). This cost reduction can open up the possibility of participating in the VMware IT Academy Program for many organizations who would be unable to afford it otherwise.

VMware vCloud Director

TOPOLOGY



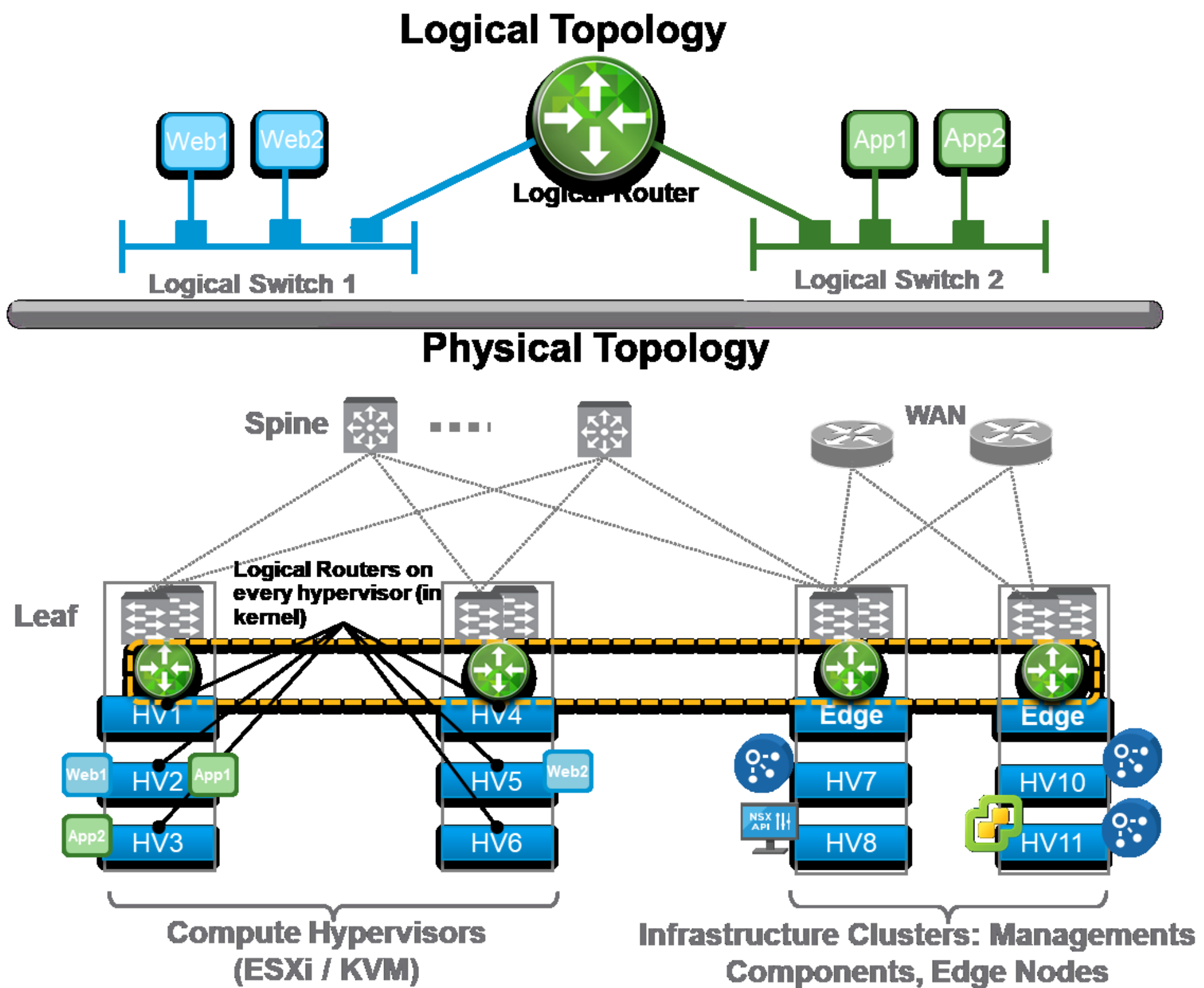
VMware vCloud Director (vCD) is deployment, automation and management software for virtual infrastructure resources in multi-tenant cloud environments.

Price:

\$25 for 4 hours

VMware NSX

TOPOLOGY



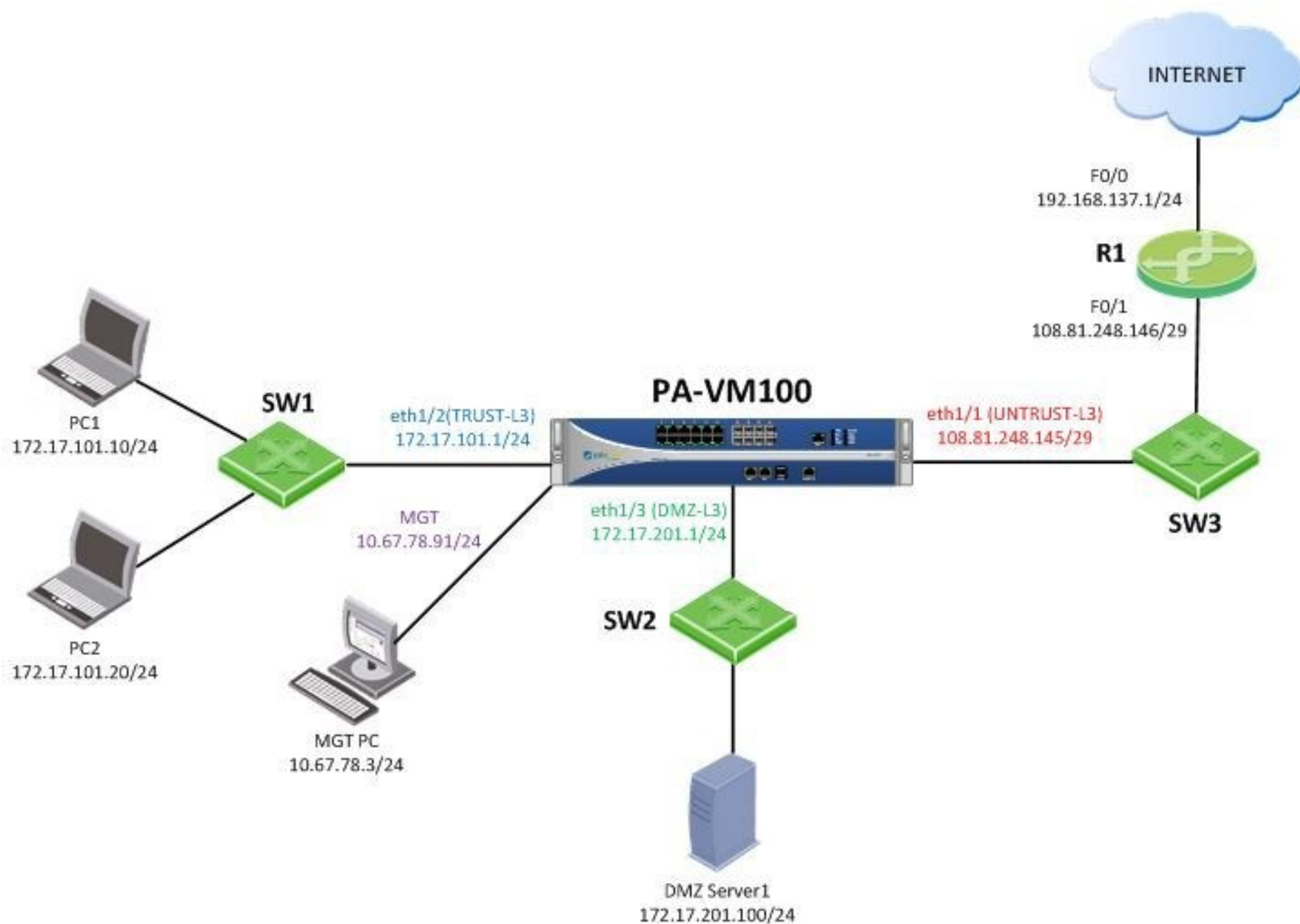
What is VMware NSX? VMware NSX is the network virtualization platform that enables the implementation of virtual networks on your physical network and within your virtual server infrastructure. It delivers the operational model of a virtual machine for the network.

Price:

\$25 for 4 hours

Palo Alto

TOPOLOGY



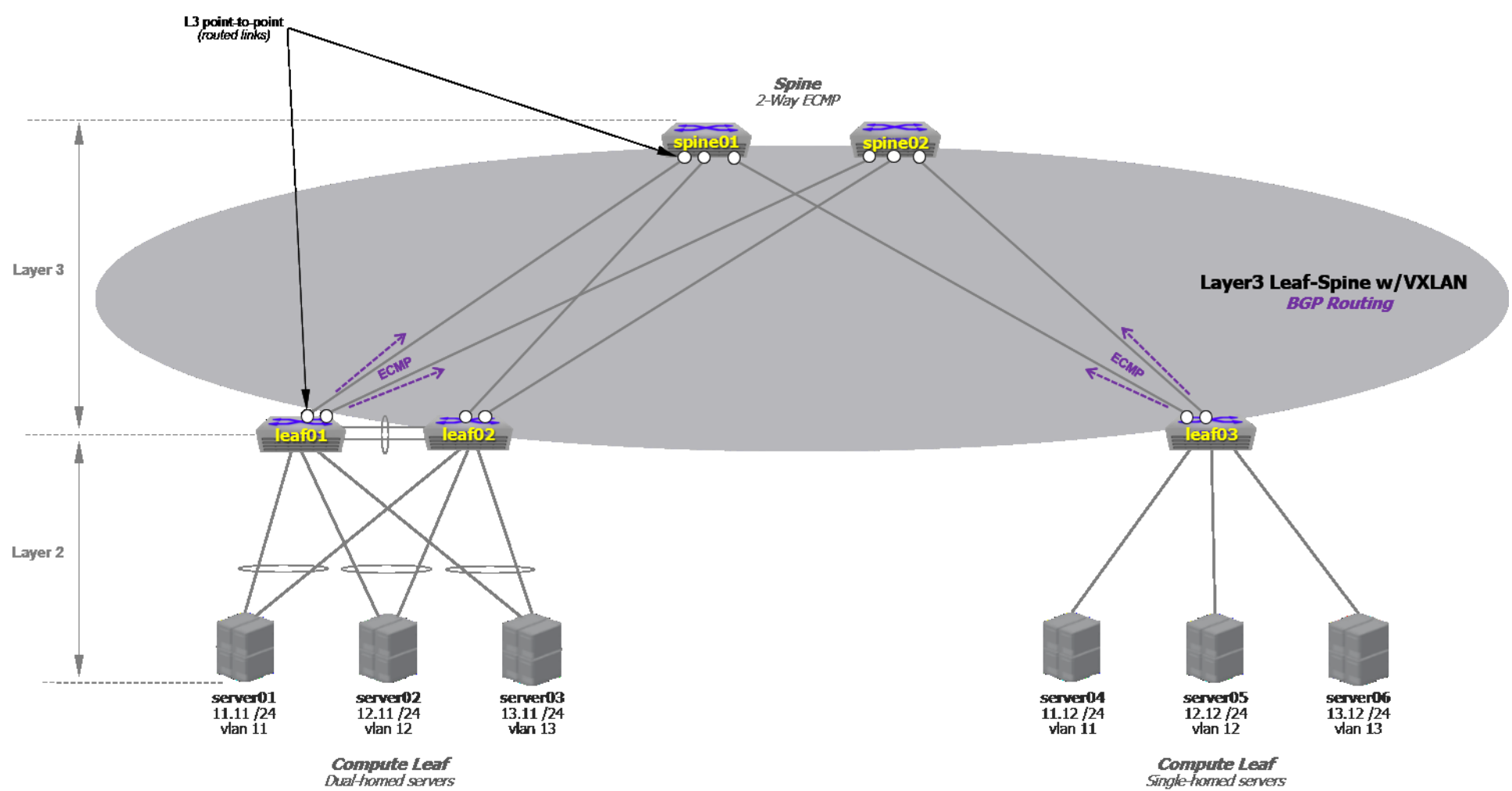
The Palo Alto Networks Security Operating Platform® prevents successful cyberattacks through intelligent automation. The platform combines network and endpoint security with threat intelligence and accurate analytics to help streamline routine tasks, automate protection, and prevent cyber breaches. Tight integrations across the platform and with ecosystem partners deliver consistent security across clouds, networks, and mobile devices, natively providing the right capabilities, at the right place, across all stages of an attack lifecycle.

Price:

\$25 for 4 hours

Arista

TOPOLOGY

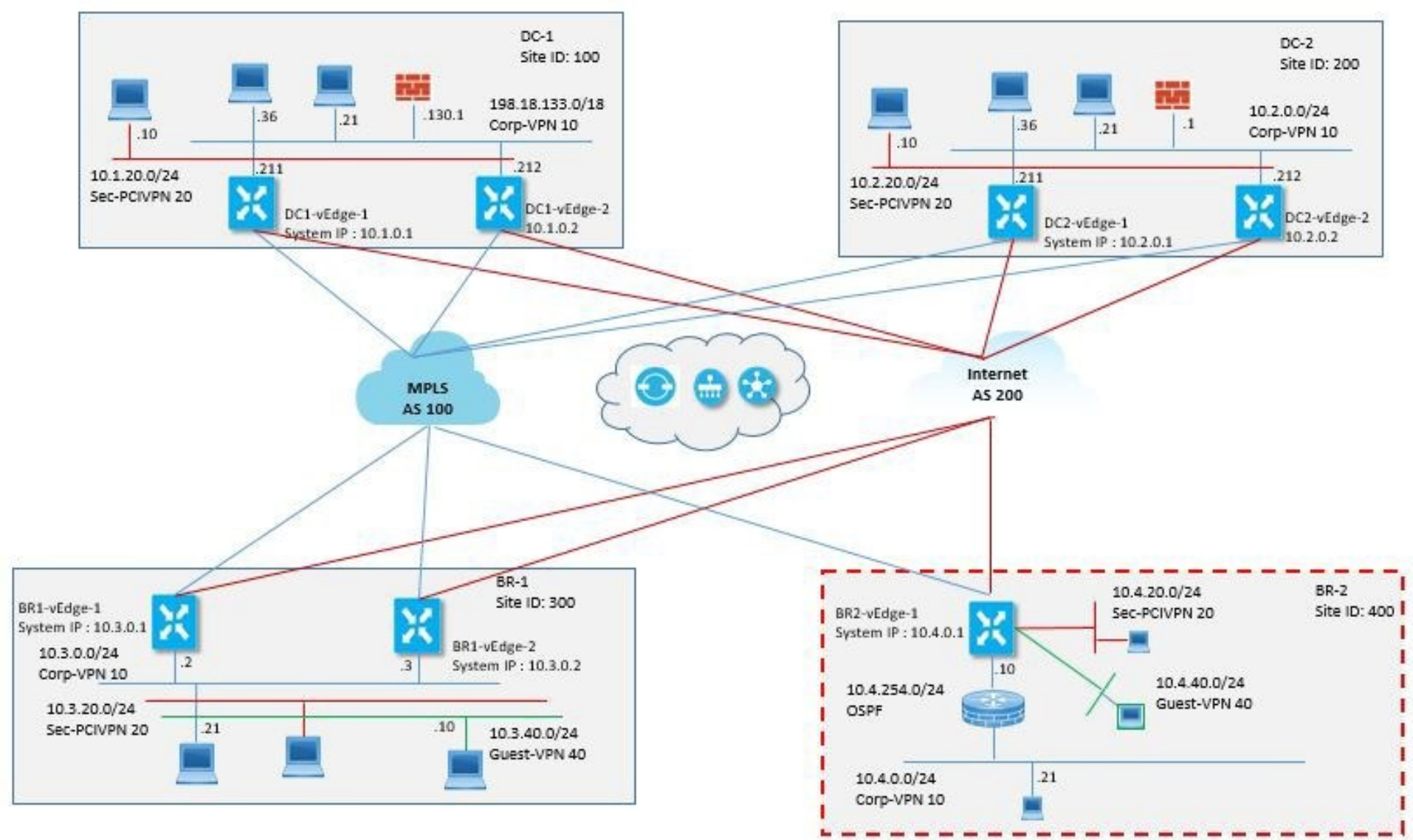


Arista Networks pioneered software-driven, cognitive cloud networking for large-scale datacenter and campus environments. Arista's award-winning platforms, ranging in Ethernet speeds from 10 to 400 gigabits per second, redefine scalability, agility and resilience. Arista has shipped more than 20 million cloud networking ports worldwide with Cloud Vision and EOS, an advanced

Price:
\$25 for 4 hours

SDWAN (Viptela)

TOPOLOGY



SD-WAN is an acronym for software-defined networking in a wide area network (WAN). SD-WAN simplifies the management and operation of a WAN by decoupling the networking hardware from its control mechanism.

Price:

\$25 for 4 hours